

Be part of Travelrite's and John Howie's outstanding 2025

Country Music Cruise TO New Zealand

18 to 30 November 2025

Sydney; Fiordland National Park (Milford, Doubtful & Dusky Sounds);
Dunedin; Christchurch; Tauranga/Rotorua; Auckland; Bay of Islands

Departing from and
returning to Sydney
aboard the luxurious
Celebrity Edge

Featuring exclusive concert performances by
**Amber Lawrence, Lyn Bowtell,
Craig Giles, The Crosby Sisters,
Dave Prior and Gregory North**



*Cabins (and various categories of cabins) on
Celebrity Edge book out early, so book straight
away to avoid disappointment.*



TRAVELRITE
INTERNATIONAL

Celebrity **X** Cruises®

John Howie
MUSIC TOURS
& CRUISES



Country Music Cruise TO New Zealand

The Country Music Cruise to New Zealand is a wonderful opportunity to cruise on the luxurious Celebrity Edge, enjoy outstanding live country music (& bush poetry), and take in the highlights of New Zealand's spectacular North and South islands. The cruise is fully escorted and includes a sightseeing coach tour to Rotorua (from Tauranga) and an Afternoon Drinks performance, in Auckland, by one of NZ's outstanding country music artists. Enjoy this fabulous 'Country Music Festival at Sea', including a host of exclusive concerts, pre-dinner drinks performances, & other special country music-related events.

Great Cruise Inclusions...

- 13 days/12 nights on the luxurious Celebrity Edge. Celebrity Edge is an amazing, innovative, state-of-the-art cruise ship; maiden voyage was in 2018.
- Amber Lawrence, Craig Giles, The Crosby Sisters, Gregory North, Andy Toombs (bass player) and a lead guitarist accompany you on the 1st half of the cruise (Sydney to Christchurch). Lyn Bowtell, Craig Giles, Dave Prior, The Crosby Sisters, Andy Toombs and a lead guitarist accompany you on the 2nd half of the cruise (Christchurch to Sydney).
- 8 exclusive, private, 1 hour on-board concerts. 8 exclusive, private, Pre-Dinner Drinks music sessions (about 7 or 8 songs at each session).
- 1 exclusive, private Afternoon Drinks performance, by a top NZ country music artist, in Auckland (approx. 60 minute performance).
- In addition to our exclusive country music concerts/sessions, all other entertainment provided by the cruise ship is included.
- Sightseeing coach tour from Tauranga to Rotorua, return, Day 8.
- Fully escorted by John Howie.
- Cruise taxes and port and handling charges.
- All meals on board Celebrity Edge.
- Gratuities.

DAY 1 Tuesday 18 November, 2025

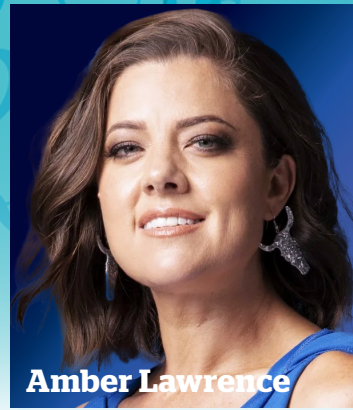
Departure

Afternoon: Board Celebrity Edge (sails at 6.45pm). Be on deck as we cruise spectacular Sydney Harbour. *Evening:* Attend a colourful Broadway type show in the ship's impressive main auditorium.

DAY 2 Wednesday 19 November, 2025

Cruising Tasman Sea

Our first day at sea. *Morning:* Free time for you to explore and enjoy the fantastic facilities and many activities available on Celebrity Edge. *Afternoon:* Enjoy our 1st exclusive on-board concert, featuring Craig Giles. *Evening:* We formally welcome our tour group with a Welcome Aboard Drinks Party. This will be an excellent opportunity for you to meet and chat with our exclusive cruise performers, tour managers and other tour group members.



Amber Lawrence

Amber Lawrence is one of Australia's leading female country singers. She has been awarded 6 Golden Guitars, her most recent being for Female Artist of the Year, at the 2023 Awards in Tamworth. She has also been inducted into the prestigious Galaxy of Stars, alongside legends such as Kasey Chambers and Lee Kernaghan. Amber has released 7 studio albums and 3 children's albums. She has entertained the troops in Afghanistan, The Sinai & East Timor, and she considers these performances to be among the most rewarding moments in her career.



Lyn Bowtell

With stunning, heartfelt vocals, beautifully crafted songs, and world-class performances, there are few female voices in Australia to rival the class and style of Lyn Bowtell. An innovative songwriter, Lyn defies easy classification. With influences reaching from pure country to blues, jazz and pop, Lyn has her own distinctive voice and musical identity. Lyn is a ten-time Golden Guitar winner, Toyota Star Maker winner, MO award winner, and is the Artistic Director of the CMAA Academy of Country Music.

DAY 3 Thursday 20 November, 2025

Cruising Tasman Sea

Morning: Enjoy our 2nd exclusive on-board concert, featuring outstanding bush poet, Gregory North. *Afternoon:* Enjoy our 3rd exclusive on-board concert, featuring The Crosby Sisters. *Evening:* Enjoy our 1st exclusive Pre-Dinner Drinks music session, featuring Amber Lawrence. Every evening enjoy a fabulous group dinner in one of the ship's opulent dining rooms.

DAY 4 Friday 21 November, 2025

Fiordland National Park

Today we enjoy scenic cruising in Milford, Doubtful and Dusky Sounds. This south-west part of the South Island is one of the most beautiful wilderness regions in the world. Enjoy amazing scenery as we sail into these spectacular Sounds. *Morning:* Enjoy a special Music Industry Forum (question & answer session) with Amber Lawrence, Craig Giles, The Crosby Sisters and Gregory North. They will give us some insights into their lives as entertainers and share some wonderful stories. *Afternoon:* Enjoy our 4th exclusive on-board concert, featuring Amber Lawrence. *Evening:* Enjoy our 2nd exclusive Pre-Dinner Drinks music session, featuring Gregory North.



DAY 5 Saturday 22 November, 2025

Dunedin

We arrive in the city of Dunedin, at approx. 8am. Originally founded by Scottish settlers and known as the 'Edinburgh of the South', Dunedin has many beautifully preserved historic buildings, including the impressive Dunedin Railway Station (1906) and the beautiful Jacobean style Olveston House (1904-6), which contains a treasure trove of art and antiques. You will have free time, today, to explore Dunedin and the nearby Otago Peninsula at your leisure. Celebrity Edge sails at 6pm. *Evening:* Back on the ship, enjoy our 3rd exclusive Pre-dinner Drinks session, featuring Craig Giles.

DAY 6 Sunday 23 November, 2025

Christchurch

Today we visit Christchurch, the South Island's largest city, arriving approx 8am. Christchurch is considered a very 'English' city, with lovely parks & gardens and flat-bottomed punts gliding on the Avon River, which meanders through the city centre. Nearby is the spectacular Banks Peninsula, including the village of Akaroa. Originally founded by the French, this charming town still has a distinctly French ambience. You will have free time, today, to explore Christchurch and surrounding region at your leisure. Celebrity Edge sails at 6pm. *Evening:* Back on the ship, enjoy our 4th Pre-Dinner Drinks music session, featuring The Crosby Sisters.

DAY 7 Monday 24 November, 2025

At Sea

Explore the ship, participate in its many activities, & browse in the on-board designer boutiques. *Morning:* Enjoy our 5th exclusive on-board concert, featuring Craig Giles. *Afternoon:* Our 2nd Music Industry Forum (question & answer session), with Lyn Bowtell, Craig Giles, Dave Prior and The Crosby Sisters. Your chance to ask our exclusive artists (2nd half of cruise) questions about their music careers. *Evening:* Our 5th exclusive Pre-Dinner Drinks music session, featuring Dave Prior.



Craig Giles



The Crosby Sisters



Dave Prior



Gregory North

Craig Giles is one of Australia's most popular entertainers. His rich singing voice, dynamic stage presence, and friendly personality have earned him a place as one of the top artists in Australian country music, rock 'n' roll, and rockabilly. He performs Australia wide, and has performed in America, Europe and New Zealand and on many music cruises. He has many successful albums, hit singles, and music industry awards to his credit. www.craigiles.com

The Crosby Sisters is an Australian country music duo consisting of Jodie and Kelly Crosby, from Tamworth. They are known for their outstanding vocal harmonies. In 2001 they won the Vocal Group or Duo of the Year Golden Guitar at the Country Music Awards in Tamworth. They have opened concerts and toured with many international stars, including Dr Hook, Charley Pride and Foster & Allen. They rate a tour with Slim Dusty as one of the highlights of their career.

Dave Prior is an outstanding Country singer, songwriter and comedian, from South Australia. For many years he worked in the commercial radio industry, as an announcer, program director and station manager. However, a mid-life career change saw him working as a singer/comedian, including touring with Adam Harvey, Doug Walters (cricketer), and Rodney Vincent. Dave has released many CDs, including an outstanding Merle Haggard tribute CD, Silver Wings and Haggard Things.

Gregory North is one of Australia's finest, and funniest, bush poetry performers. He was the male Australian bush poetry performance champion in 2008, 2009 & 2010. He performs traditional Australian material in his own quirky, humorous, modern style. His recitals of Banjo Paterson's The Man from Snowy River and Clancy of the Overflow are unique, clever, and hilarious. Since 2003 he has travelled Australia, performing bush poetry.

DAY 8 Tuesday 25 November, 2025

Tauranga/Rotorua

8am: Arrive in Tauranga, a thriving port city on the east coast of New Zealand's North Island. Travel by coach to the city of Rotorua, famous for its Maori culture & geothermal activity. If possible, view the eruption of the Lady Knox Geyser. We then visit Wai-O-Tapu Thermal Wonderland, where you will see incredible geothermal displays, including boiling mud pools, steaming craters, and amazing coloured lakes/terraces. *Afternoon:* Sightseeing coach tour of Rotorua. See beautiful Elizabethan-style Bath House, and have free time for shopping, before returning to Tauranga. Celebrity Edge sails at 7.15pm.



DAY 9 Wednesday 26 November, 2025

Auckland

6.30am: Arrive in Auckland, New Zealand's largest city. Known as the 'city of sails', Auckland is blessed with a spectacular waterfront, a magnificent skyline, and beautiful beaches. Auckland Domain, the city's oldest park, is home to the excellent Auckland War Memorial Museum, and the outstanding Domain Wintergardens (a complex of gardens including 2 large glasshouses). You will have free time, today, to explore Auckland at your leisure. *Afternoon:* Enjoy an exclusive on-shore Afternoon Drinks performance, in Auckland, featuring one of New Zealand's outstanding country music acts. Afternoon drinks, own expense. Celebrity Edge sails at 8pm.

DAY 10 Thursday 27 November, 2025

Bay of Islands

7am: Arrive in the spectacular Bay of Islands, one of the most beautiful spots in New Zealand (the bay is dotted with 150 scenic islands). Tender boats will take us to the main town, Paihia. You will have free time, today, to explore the Bay of Islands area at your leisure. You may wish to visit the Waitangi Treaty

Grounds, where the treaty between settlers and Maoris was signed in 1840. You may also like to catch a ferry over to the charming and historic village of Russell. Russell, NZ's first European settlement, was for many years a notorious whaler, sealer and escaped convict town. Celebrity Edge sails at 4.30pm. *Evening:* Enjoy our 6th exclusive Pre-Dinner Drinks music session, featuring Lyn Bowtell.

DAY 11 Friday 28 November, 2025

Cruising Tasman Sea

Enjoy a relaxing day at sea. *Morning:* Enjoy our 6th exclusive on-board concert, featuring The Crosby Sisters. *Afternoon:* Enjoy our 7th exclusive on-board concert, featuring Dave Prior. *Evening:* Enjoy our 7th exclusive Pre-Dinner Drinks music session, featuring Craig Giles.

DAY 12 Saturday 29 November, 2025

Cruising Tasman Sea

Today you are free to enjoy the wonderful facilities and many activities available aboard Celebrity Edge. *Morning:* Enjoy an exclusive fun-filled Country Music Quiz. Excellent prizes for the winning teams! *Afternoon:* Enjoy our 8th exclusive on-board concert, featuring Lyn Bowtell. *Evening:* Enjoy our final exclusive Pre-Dinner Drinks music session, featuring The Crosby Sisters and our other '2nd half of cruise' artists.

DAY 13 Sunday 30 November, 2025

Sydney

Tour members will disembark the ship this morning and tour arrangements conclude.



Celebrity Edge



The Celebrity Edge stands as a pinnacle of modern luxury cruising, introducing a paradigm shift in design and experience. This innovative vessel, crafted by Celebrity Cruises, showcases a striking exterior with the iconic "Magic Carpet," a floating platform that redefines onboard versatility. Inside, passengers are treated to spacious staterooms with Infinite Verandas, seamlessly blending indoor and outdoor living. Culinary excellence takes centre stage with diverse dining options curated by renowned chefs. The ship offers a myriad of entertainment, from theatres to a Rooftop Garden, providing a harmonious balance of relaxation and excitement.

Clothing on board Celebrity Edge

During the day casual clothing is typical, although shorts and swimwear are not permitted in the formal restaurants. There are four nights at sea classified as formal for dress purposes. During the evening, you may like to dress in a dinner suit or dark suit for gentlemen and eveningwear for ladies for the main restaurants. Smart casual attire is required in the public lounges and restaurants.

Don't worry about coming alone

About a third of people on the cruise travel alone. We will match people up in twin-share cabins when available, saving you the single supplement. John Howie will be looking after you, to ensure you are not left out. There will be group activities almost every day

The advantages of John Howie's Country Music Cruise

Eight fabulous 1 hour country music concerts (one will be a bush poetry concert), plus 8 Pre-Dinner Drinks music sessions (one will be a bush poetry session), all available only to those who book on the Country Music Cruise to New Zealand.. The cruise is fully escorted and will be a great fun holiday with plenty of activities. Each evening you will dine with the group at our reserved tables. You will meet an interesting group of people and have a fabulous time.

Fantastic value. Nothing more to pay.

The John Howie escorted New Zealand Music Cruise represents amazing value. There are no additional extras; port and handling charges, cruise taxes and gratuities are included in the one great price.

Country Music Cruise TO New Zealand

18 to 30 November 2025

Included in the Country Music Cruise to New Zealand price:

- Travel on Celebrity Edge in the selected cabin category.
- All meals, entertainment and service charges on the Celebrity Edge.
- 8 Exclusive music concerts & 8 exclusive Pre-Dinner Drinks music sessions on board.
1 Afternoon Drinks music performance, by a top NZ country music artist, in Auckland.
- 2 exclusive Music Industry Forums (question & answer session), & 1 exclusive Country Music Quiz.
- Exclusive Welcome Aboard Drinks Party, with our Australian country music artists.
- Day 8. Sightseeing coach tour from Tauranga to Rotorua, return, including eruption of the Lady Knox Geyser (if possible), and visit to the Wai-O-Tapu Thermal Wonderland.
- Tour leadership by John Howie.
- Port and handling charges on Celebrity Edge.
- Cruise taxes.
- Gratuities.



Not included in the price:

- Travel insurance.
- Additional travel arrangements not detailed in the itinerary. These will be quoted for separately.
- Passport and visa fees.
- Drinks on board. Though there are many drinks, on board, that you have to pay for, there are some free drinks (e.g., some teas; some coffees; some soft drinks; some water). Drinks are 'included' (i.e., complimentary) at the Welcome Aboard Drinks Party (Day 2). Drinks at the Pre-Dinner Drinks music events are 'own expense'.
- Morning teas, lunches, afternoon teas, dinners, when not on the ship.
- Return ferry ride, Paihia to Russell (Bay of Islands). Costs approximately \$10.
- Please note: we are not including on-shore excursions, for our tour group, in Dunedin, Christchurch, Auckland, & Bay of Islands. You will have free time, and any activities/tours/visits will be at 'own expense'.

Prices per person in Australian Dollars

Cabin / Description	Deck	Twin-share	Single Fare
D1 Deluxe Inside	7,8,9,11	\$ 6,495	\$ 9,860
P1 Deluxe Porthole with Balcony	7,8,9	\$ 7,695	\$ 12,250
E3 Edge with Infinite Balcony (Partial)	6,7,8	\$ 7,750	\$ 12,295
E2 Edge with Infinite Balcony	6,7,8	\$ 7,850	\$ 12,450
E1 Prime Edge with Infinite Balcony	7,8,9	\$ 7,895	\$ 12,595
C2 Concierge Class with Balcony	9,10,11,12	\$ 8,050	\$ 12,850
C1 Concierge Class with Balcony	11,12	\$ 8,150	\$ 13,000
Included port & handling charges and taxes		\$ 1090	\$ 1,690

Prices may change, please check www.travelrite.com.au for up to date prices

Availability:

All cabins are subject to cabin availability. Please call for details, fares and information on other cabin categories on 1800 630 343.



Andy Toombs

Andy Toombs. Andy will be our bass player on the cruise, backing all our featured artists that require backing. Andy is currently based in the Northern Territory, having travelled and toured alongside some of Australia's most respected music performers, including Kasey Chambers, Dave Gleeson (lead singer with The Screaming Jets) and Troy Cassar-Daley. Andy is an outstanding guitar player, bass player, & singer.



John Howie – tour manager

John was a secondary school music teacher for 23 years (taught Kylie Minogue). He and his twin brother, Graeme, perform as The Howie Brothers. John has been leading successful music tours for over 25 years.

General Information and Booking Conditions

It is important that all tour participants have a basic level of physical fitness that allows them to take part in this activity without the need of assistance from others.



TRAVELRITE
INTERNATIONAL



TOUR OPERATOR: Travelrite International Pty Ltd (ABN 64 005 817 078) is the tour organiser. Celebrity Edge is operated by Celebrity Cruises Lines and New Zealand music cruise arrangements are subject to the terms and conditions and general information detailed in the Celebrity Cruises brochure /website. All passengers must complete the Celebrity Cruises online check-in and Travelrite International booking form.

DEPOSIT AND PAYMENT: A non-refundable deposit of \$900 per passenger should be sent with a completed Travelrite International booking form that lists your requested cabin category. As soon as the booking is confirmed, (usually within 24 hours), a cruise confirmation advice will be posted to the client. The confirmation advice will contain all details. Final payments are due to be paid to Travelrite International 90 days prior to the commencement of the New Zealand music cruise. A 1.5% administration fee applies to payments by credit card.

CANCELLATION CHARGES: Number of days before sailing.

Days prior to Departure	Cancellation Fee
Over 90 days	\$900
90 days or less	100% of full fare
Non appearance/no written notice:	100% of full fare

REFUNDS: This cruise is based on arrangements which do not allow for any refunds in respect to sightseeing, accommodation, meals or other services not utilised after the respective tour has commenced.

TRAVEL DOCUMENTS: All passengers will require a valid passport. If not an Australian passport holder, check with Travelrite International for visa requirements.

TRAVEL INSURANCE: Adequate travel insurance is highly recommended to cover cruise members for the consequences of unforeseen events during the cruise and for cancellation fees that could result from events such as illness, accident, death etc.

BAGGAGE: Passengers qualify for a 20kg free baggage allowance on flights to join or return from the cruise.

MINIMUM TOUR NUMBERS: The cruise arrangements have been made on the basis of a minimum number of passengers travelling. In the event that less than the required number of passengers have confirmed their booking 90 days from the date of departure,

Travelrite International reserves the right to cancel the tour, giving a full refund of monies paid, or offer arrangements to proceed with the tour at a modified fare.

RESPONSIBILITIES: Travelrite International Pty Ltd is the tour organiser. Travelrite International Pty Ltd, its agents, officers, affiliates, and/or suppliers of services, pursuant to or in connection with these fly/cruises, shall act only as agents in making arrangements for hotels, transportation, including transportation by ship, restaurants, or any other service and do not assume any liability whatsoever for any injury, damage, death, loss, accident or delay to person or property due to an act of negligence or a default of any hotel, carrier, restaurant, company or person rendering any services included in fly/cruises, terrorism, acts of God, acts of government or any other authorities. Further, no responsibilities are accepted for any damage or delay due to sickness, pilferage, labour disputes, machinery break-down, quarantine, government restraints, weather or other causes beyond our control. No responsibility is accepted for any additional expense, omission, delays, re-routing or acts of any government authority. Baggage is at owners' risk throughout the fly/cruise. The passage contract between the carriers concerned when issued, shall constitute the sole contract between the carriers and the purchasers of these fly/cruises and/or the passengers. The right is reserved to withdraw any fly/cruise and/or make such changes in the fly/cruise as may be found desirable or necessary for the convenience of the parties and the proper carrying out of the fly/cruise. This contract shall be construed in accordance with the laws of the State of Victoria, Australia and any action must be undertaken in the State of Victoria. Attention is also directed to the terms and conditions of the fly/cruise passage contract with Princess Cruises, detailed on the back of the reservation form. If you do not have a copy of this form please contact us and we will send one to you.

DELAYS AND UNFORESEEN EVENTS: You engage Travelrite International to book this tour on your behalf and you acknowledge that Travelrite International acts as your agent for the purpose of making contracts between you and the various providers of accommodation, transportation and other services that comprise the tour. Travelrite International may without reference to you provide or

make available to you, or may as your agent engage any third party to provide or make available to you, any good or service which Travelrite International reasonably believes is necessary for your benefit to maintain the tour itinerary, repatriate you or otherwise accommodate, transport or sustain you in circumstances in which the tour itinerary fails wholly or partly for any reason. You appoint Travelrite International your attorney for this purpose. You agree to pay Travelrite International any cost thereof and you indemnify Travelrite International in respect of any cost it incurs in this regard. Travelrite advises you to obtain travel insurance generally including in respect of the risk that any such good or service may become required.

HOW TO BOOK: Bookings can be made by completing a booking form and sending it with a non-refundable deposit of \$900 per person to:

Travelrite International Pty Ltd
423 Whitehorse Road,
Balwyn Victoria 3103

Further information can be obtained by telephoning

Toll Free: 1800 630 343

Phone: (03) 8803 6868

Email: sales@travelrite.com.au

www.travelrite.com.au

www.musicstours.com.au

ABOUT TRAVELRITE INTERNATIONAL: Travelrite International Pty Ltd (ABN 64 005 817 078) is a well-established family-owned business that's been operating in Melbourne's eastern suburbs for more than 40 years. Travelrite International is a full member of the Australian Federation of Travel Agents (AFTA), is fully Accredited with ATAS (A10538) and IATA. As such they directly represent the major airlines of the world and all major domestic and international hotel, tour and transport operators.